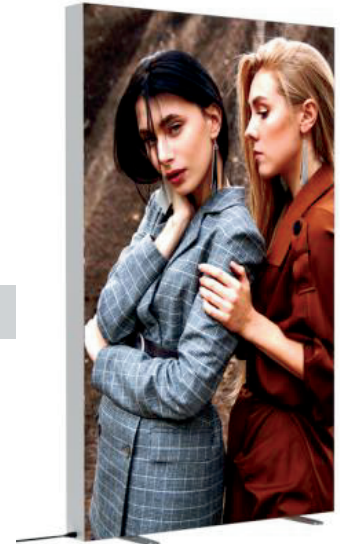
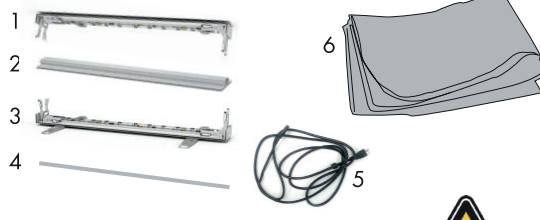


Fusion Glo

Product Parts

- 1 - Top Assembly with lights (x1)
- 2 - Vertical Support (Depends on Model)(x2)
- 3 - Bottom Assembly with feet and lights (x1)
- 4 - Center Support Pole (Depends on Model)(x1)
- 5 - Power Cord
- 6 - Graphic (x2)



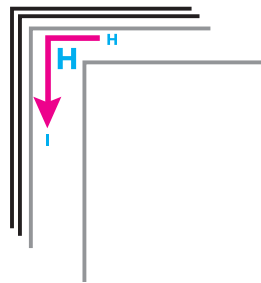
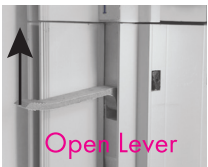
Display Set-Up

Step 1

Set Bottom Assembly (3) on floor and rotate both feet 90 degrees.

Step 2

Open levers on Vertical Supports (2) and insert into each corner piece of Bottom Assembly (3). Match lettered stickers found on corners and Vertical Supports. Close levers on each once fully seated.



CAUTION
SHARP EDGES ON METAL PARTS

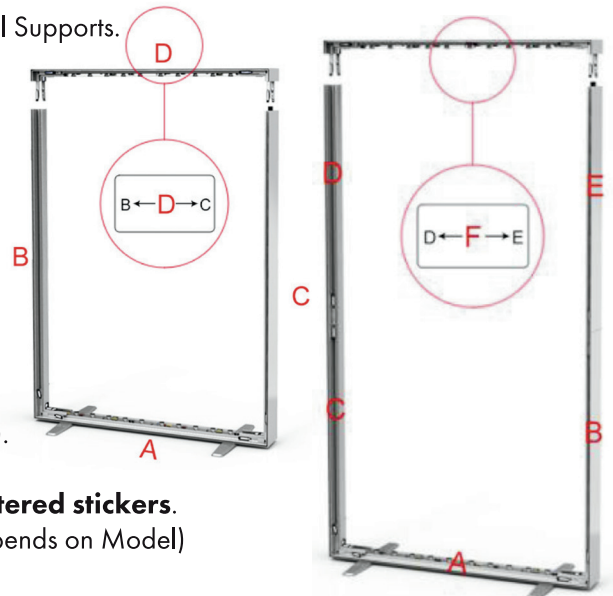
DO NOT PLUG POWER CORD IN UNTIL FULLY ASSEMBLED

Step 3

Open levers on Top Assembly (1) and insert into each Vertical Support (2). Match lettered stickers found on corners and Vertical Supports.

LED lights will NOT illuminate if not assembled following the lettered stickers.

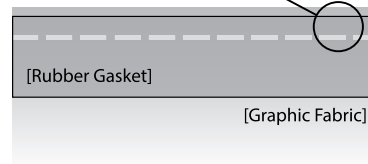
Close levers on each once fully seated. Insert Center Support Pole (4)(Depends on Model)



Step 4

Insert the graphic's gasket edges into the frame, by inserting each corner into the frames four corners, then work around the frame alternating opposite sides until complete. **Loop** for removing Graphic will be at bottom corner.

Insert stitched side of the gasket first



To remove the graphics, pull the loop found on the corner.



Step 5

Attach female end of Power Cord (5) to male connection of Vertical Support (2).

Plug male end of Power Cord (5) into power source.

The top and bottom of frame will light up when plugged in if correctly assembled..

Storage & Care

Store in a cool, dry place. To clean, wipe with a damp cloth. Do not dry clean graphic.